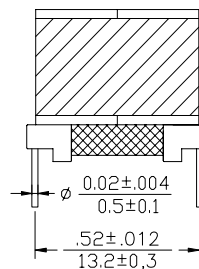
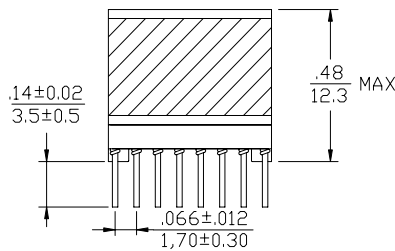
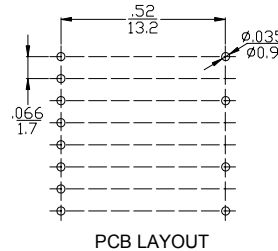
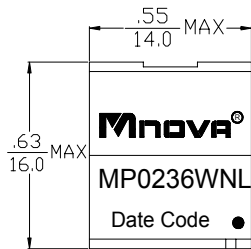


- Designed to meet UL 60950
- Working voltage up to 250Vrms
- Excellent THD performance
- ROHS Compliance Product
- Operating Temperature range: -40°C TO +85°C



Electrical Specifications @ 25°C					
P/N	T/R		OCL@10KHz 0.1V	Hi-Pot	
MP0236WNL	(16-9):(1-4),(tie11+14)		(16-9):(5-8),(tie11+14,7+6)	(16-9),(tie11+14)	PRI TO SEC
	4.25:1±3%		1:1,±3%	400µH ±5%	1875VAC,1mA,2s
	DCR			LL @ 100KHz 0.1V	
	(1-4)	(5-8),(tie7+6)	(16-9),(tie11+14)	(16-9)(tie11+14,5+6+7+8)	(16-9),(tie11+14,1+4,5+6+7+8)
	0.3Ω MAX	5.0Ω MAX	5.0Ω MAX	1.8µH MAX	1.5µH MAX
	LL @ 100KHz 0.1V		CWW @ 100KHz 0.1V		THD @ 30KHz 2V
	(16-9),(tie11+14,1+4)		(1-16),(tie11+14,6+7)		-
	2.5µH MAX		90 PF MAX		-90dB MAX

DIMENSIONS (unit: inch/mm):



SCHEMATICS:

