

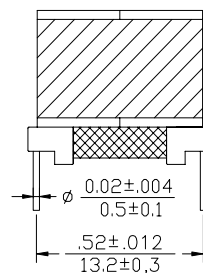
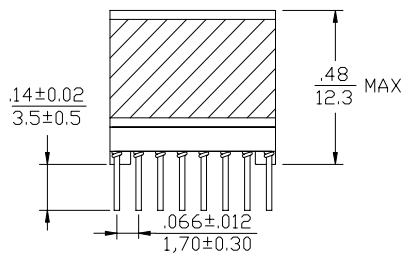
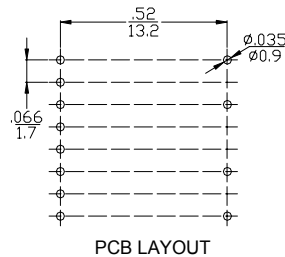
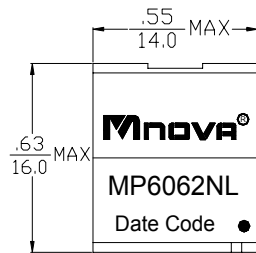
- Designed to meet UL 60950
- Working voltage up to 250Vrms
- Excellent THD performance
- ROHS Compliance Product
- Operating Temperature range: -40°C TO +85°C



### Electrical Specifications @ 25°C

P/N	T/R		OCL@10KHz 0.1V	Hi-Pot
MP6062NL	(16-9):(1-4),(tie11+14,2+3)		(16-9),(tie11+14)	PRI TO SEC
	1:1±1%		100µH ±5%	1500V AC 1mA 60s
	DCR		LL @ 100KHz 0.1V	CWW @ 100KHz 0.1V
	(5-8) (tie7+6)	(1-4) (tie2+3)	(16-9) (tie11+14)	(16-9) (tie11+14,2+3,1+4,6+7,5+8)
0.60Ω MAX	2.0Ω MAX	1.0Ω MAX	20µH MAX	35 PF MAX

### DIMENSIONS (unit: inch/mm):



### SCHEMATICS:

