

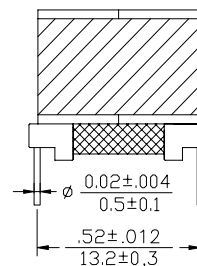
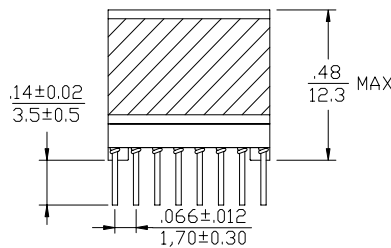
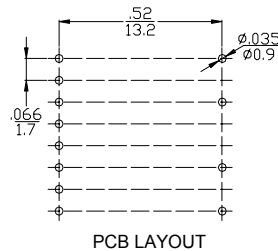
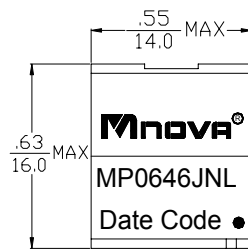
- Designed to meet UL 60950
- Working voltage up to 250Vrms
- Excellent THD performance
- ROHS Compliance Product
- Operating Temperature range: -40°C TO +85°C



### Electrical Specifications @ 25°C

P/N	T/R		OCL @ 10KHz 0.1V	Hi-Pot	
MP0646JNL	(16-9):(1-4) ,( tie11+14,2+3)		(16-9):(5-8) ,( tie11+14,6+7)	(16-9) ,( tie11+14)	PRI TO SEC
	1±2% : 1		4.2±2% : 1	1.4mH ±10%	6000V DC,1mA 2s
	DCR		LL @ 100KHz 0.1V		
	(1-4)=(2-3)	(5-8),(tie6+7)	(16-9),(tie11+14)	(16-9) (tie11+14,1+2+3+4)	(16-9) ,(tie11+14,5+6+7+8)
	2.24Ω MAX	0.756Ω MAX	9.35Ω MAX	28μH MAX	20μH MAX
	CWW @ 100KHz 0.1V		THD @ 30KHz 2V		
	(5-16),( tie6+7,11+14)		(1-16) ,( tie2+3,6+7)		-
	80PF MAX		60PF MAX		-90dB MAX

### DIMENSIONS (unit: inch/mm):



### SCHEMATICS:

