

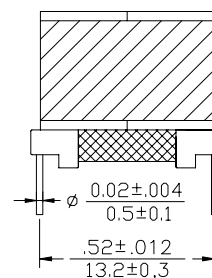
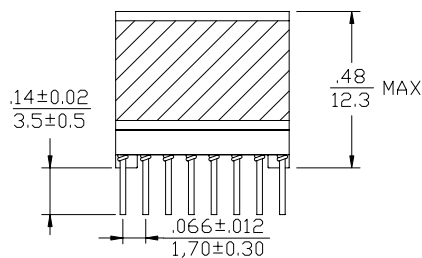
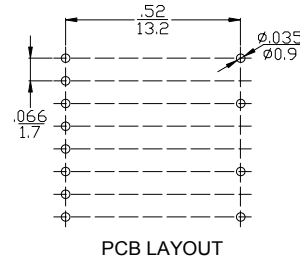
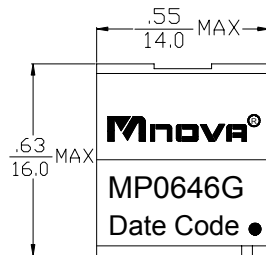
- Designed to meet UL 60950
- Working voltage up to 250Vrms
- Excellent THD performance
- ROHS Compliance Product
- Operating Temperature range: -40°C TO +85°C



Electrical Specifications @ 25°C

| P/N | T/R | | OCL @ 10KHz 0.1V | Hi-Pot | |
|---------|-------------------------------|----------------|-----------------------|----------------------------|----------------------------|
| MP0646G | (16-9):(1-4) ,(tie11+14,2+3) | | (16-9) ,(tie11+14) | PRI TO SEC | |
| | 1±2% : 1 | | 1.4mH ±10% | 1875V AC,1mA 2s | |
| | DCR | | LL @ 100KHz 0.1V | | |
| | (1-4)=(2-3) | (5-8),(tie6+7) | (16-9),(tie11+14) | (16-9) ,(tie11+14,1+2+3+4) | (16-9) ,(tie11+14,5+6+7+8) |
| | 2.244Ω MAX | 0.757Ω MAX | 9.35Ω MAX | 28μH MAX | 20μH MAX |
| | CWW @ 100KHz 0.1V | | THD @ 30KHz 2V | | |
| | (5-16),(tie6+7,11+14) | | (1-16) ,(tie2+3,6+7) | | - |
| | 80PF MAX | | 60PF MAX | | -90dB MAX |

DIMENSIONS (unit: inch/mm):



SCHEMATICS:

