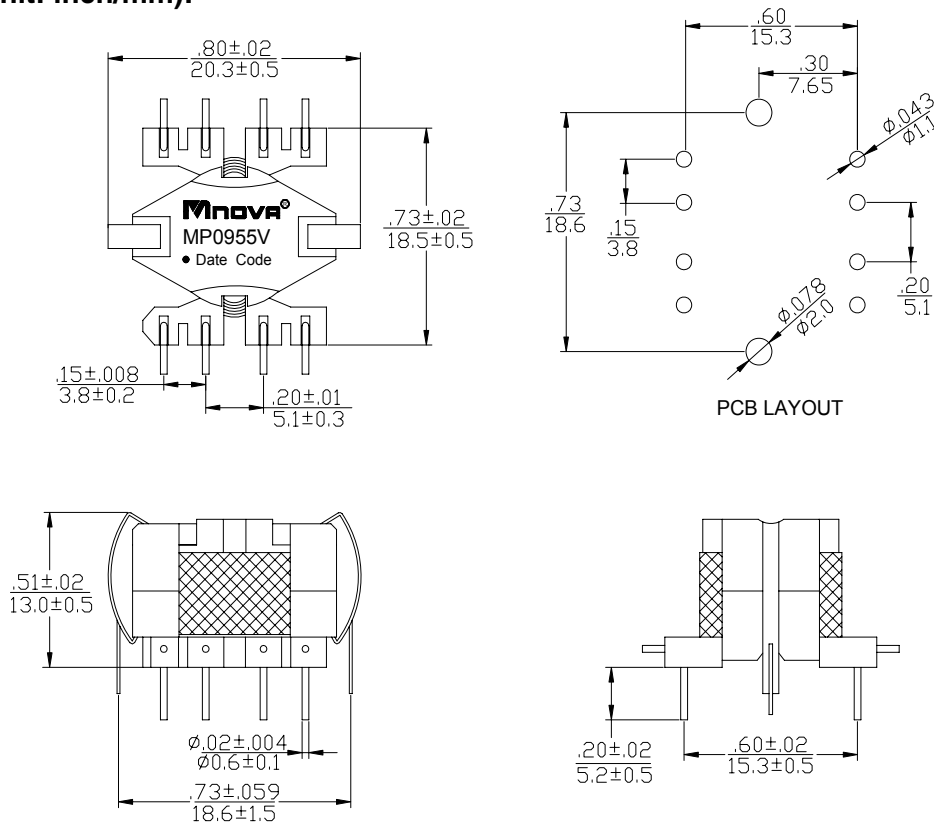


- IEC60950 Compatible
- High insulation type High efficiency
- ROHS Compliance Product
- Operating Temperature range: 0°C TO +80°C



Electrical Specifications @ 25°C			
P/N	T/R	OCL @ 100KHz 0.1V	Hi-Pot
MP0955V	(1-2):(7-8):(6-7):(5-6)	(1-2)	PRI TO SEC
	9:64:26:6	15μH±10%	1500V AC 1mA 6s

**DIMENSIONS (unit: inch/mm):**



**SCHEMATICS:**

