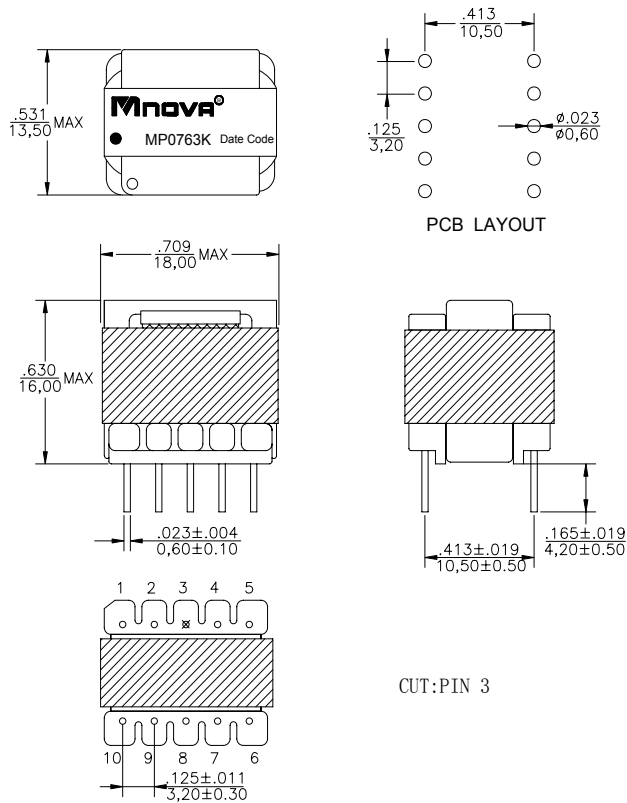


- IEC60950 Compatible
- High insulation type High efficiency
- ROHS Compliance Product
- Operating Temperature range: 0°C TO +70°C



Electrical Specifications @ 25°C					
P/N	T/R	OCL@50KHz 1.0V	LL @ 50KHz 1.0V	DCR	Hi-Pot
MP0763K	(1-2):(4-5):(10-6,7):(6,7-8,9)	(4-5)	(4-5),(tie1+2+6+7+8+9+10)	(4-5)	PRI TO SEC
	10:80:5:3	800μH±10%	30.0μH MAX	2.5Ω MAX	4000V AC 10mA 2s

DIMENSIONS (unit: inch/mm):



SCHEMATICS:

