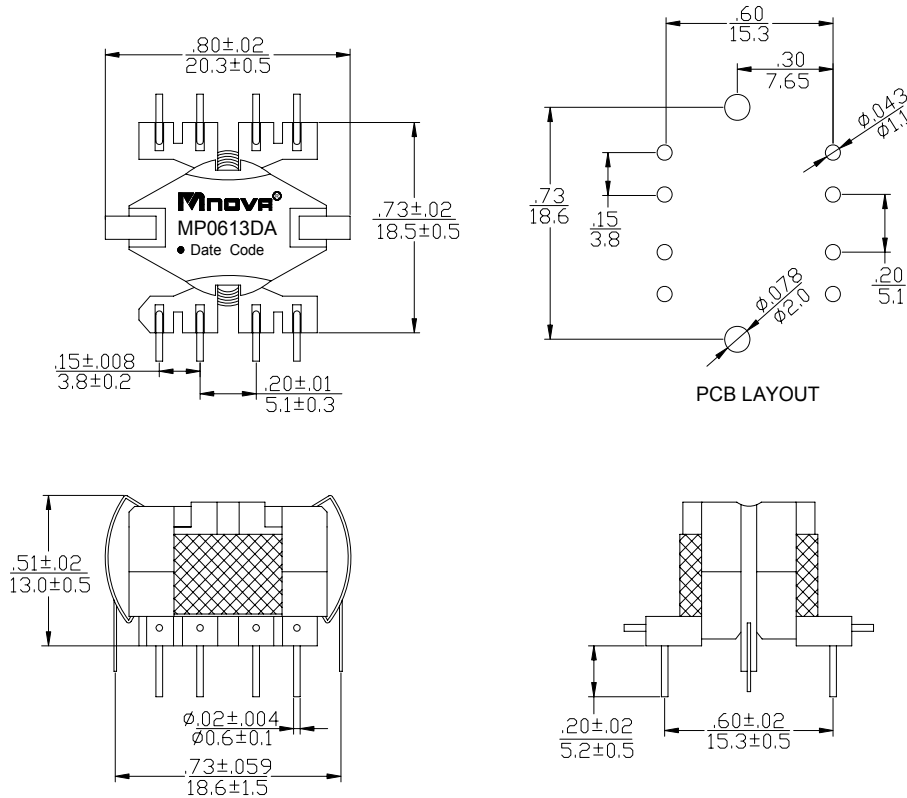


- IEC60950 Compatible
- High insulation type High efficiency
- ROHS Compliance Product
- Operating Temperature range: 0°C TO +80°C



Electrical Specifications @ 25°C				
P/N	T/R	OCL @ 100KHz 0.1V	CWW @ 100KHz 0.1V	Hi-Pot
MP0613DA	(1-2):(7-8):(6-7):(5-6)	(1-2)	(1-8)	PRI TO SEC
	(9:46:26:6)	15μH±10%	50PF MAX.	1500V AC 1mA 6s

DIMENSIONS (unit: inch/mm):



SCHEMATICS:

