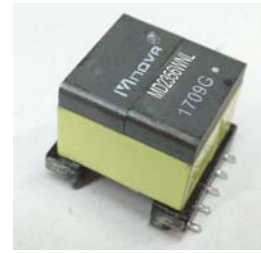


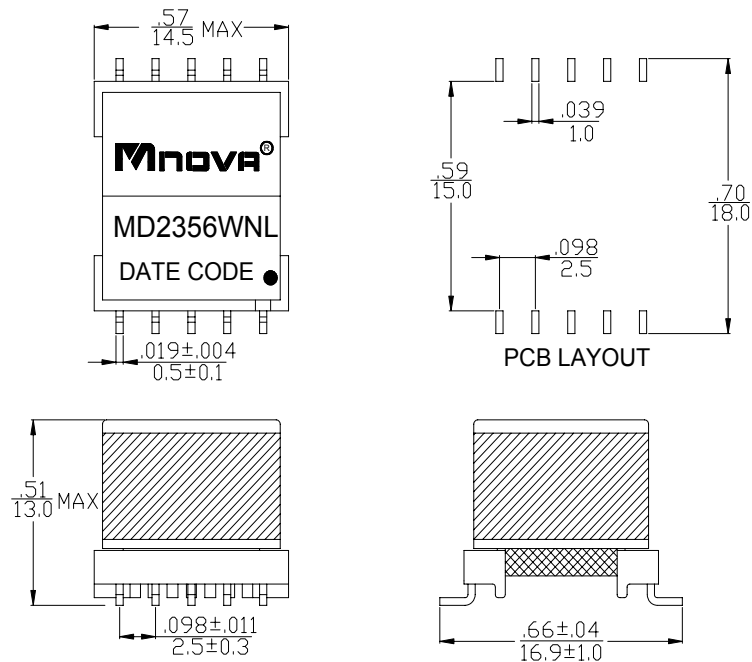
- Designed to meet UL 60950
- Working voltage up to 250Vrms
- Excellent THD performance
- ROHS Compliance Product
- Operating Temperature range: -40°C TO +85°C



### Electrical Specifications @ 25°C

P/N	T/R	OCL@10KHz 0.1V	LL@1MHz 0.1V	Hi-Pot
MD2356WNL	(1-4):(10-7),(tie2+3,9+8)	(1-4),(tie 2+3)	(1-4),(tie2+3,7+8+9+10)	PRI TO SEC
	2.5 : 1 ±3%	400µH ±10%	1.8µH MAX	1875VAC,1mA,2s
	<b>DCR</b>		<b>CWW @ 100KHz 0.1V</b>	<b>THD @ 25KHz 2V</b>
	(1-4),(tie2+3)	(10-7),(tie8+9)	(1-10),(tie2+3,9+8)	/
	1.5Ω MAX	0.7Ω MAX	130pF MAX	-83dB MAX

### DIMENSIONS (unit: inch/mm):



### SCHEMATICS:

