

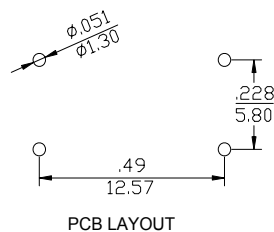
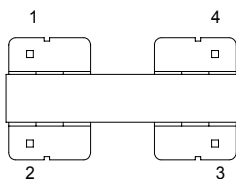
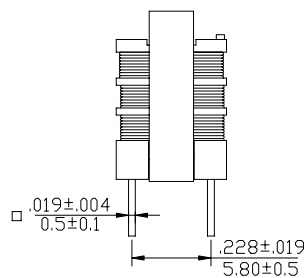
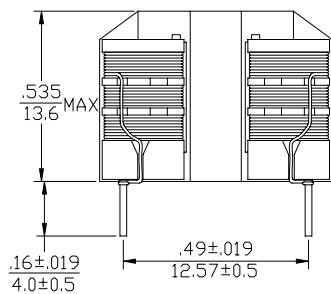
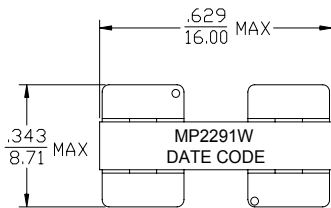
- Common mode chokes for telecom applications
- Excellent EMI performance
- Recommended solder profile: Wave soldering
- ROHS Compliance Product
- Operating Temperature range: 0°C TO +70°C



Electrical Specifications @ 25°C

P/N	T/R	OCL@10KHz 0.1V ($\mu\text{H} \pm 10\%$)	HI-POT Vrms
MP2291W	(1-2) : (4-3)	(1-2)=(4-3)	(1-2) TO (3-4)
	1:1±1%	4.41 mH MIN, 7.0mH TYP	1500
	DCR	LL@10KHz 0.1V	/
	(1-2)=(4-3)	(1-4), (tie2+3)	/
	1.8Ω±20%	600uH MIN	/

Dimensions (unit: inch/mm)



Schematics

